

The City of Bremerhaven (Northern Germany): Geestemuende, an infrastructural 'enclave' between two rivers in need of revitalisation



The district of “Geestemünde”, where the river Geeste meets the river Weser, needs to be **revitalised**.

The district needs a concept **using the potential of the river** in order to become more attractive, contribute to quality of life, and encourage SMEs and shop owners to stay in and/or move to the district.



Geestemuende is considered a disadvantaged neighbourhood.

Although it is centrally located and situated between two rivers, it is characterised by abandoned port locations - the testimony of the shipbuilding history – and by high vacancy rates due to high outward migration from the district.

There is a large deficit in open space and a below-average mobility of the residents.



Planning approach:

The district is surrounded by water, but it is not easy to access or to experience.

There are many **barriers** – both physically and in the people's minds.



Planning approach:

Due to climate adaptation measures, the district's dikes along the Weser need to be **raised**, which offers **new opportunities** (multi-use options and better amenity values) for the district.



Dept. of Economic Affairs

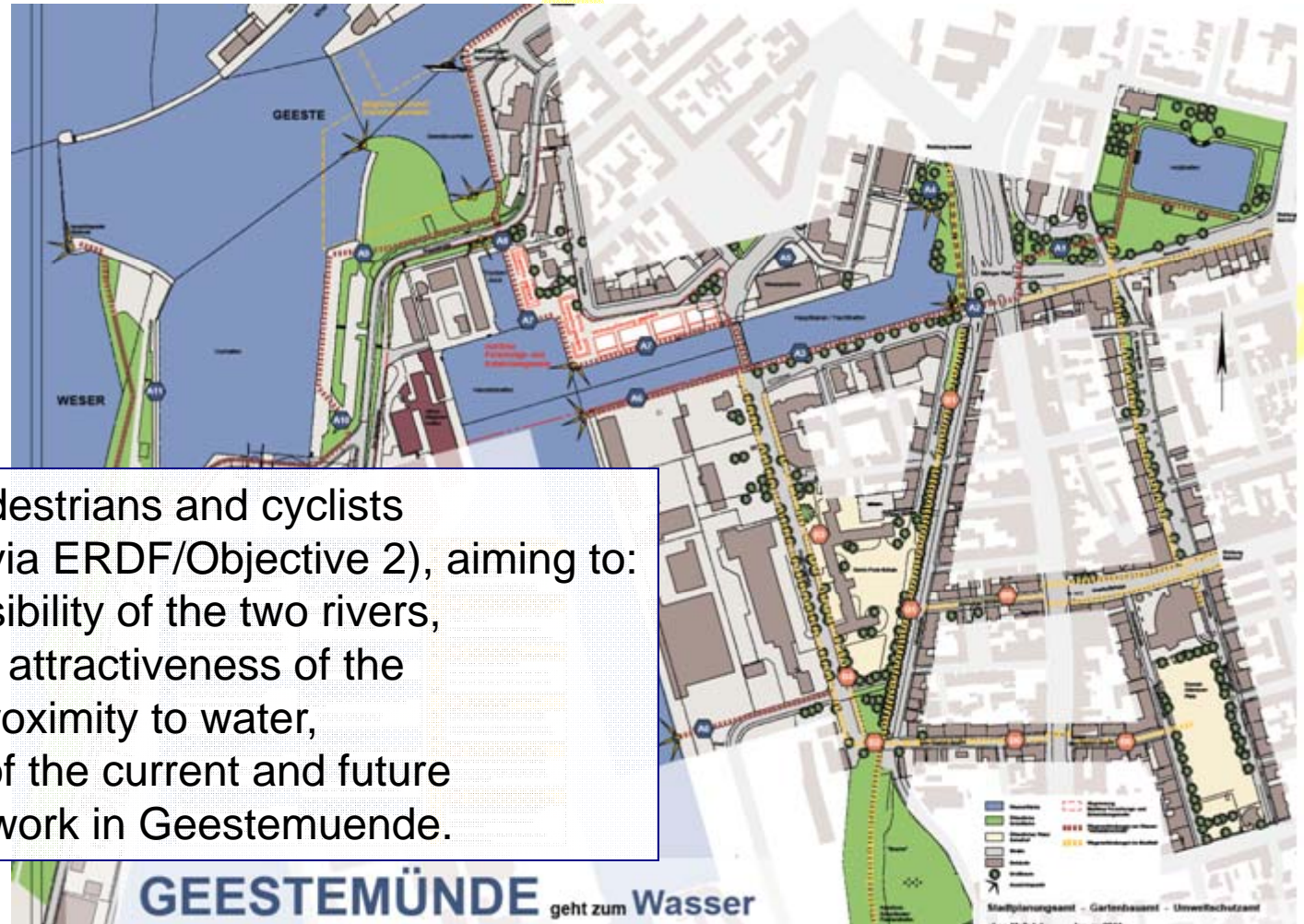
We would like to use the restructuring of the area to increase the living conditions and quality of housing in the district.

Through pilot activities together with local stakeholders, we are planning to make significant water-places visible and accessible.

A cross-cutting approach and the increase of local networks, business improvement districts, etc. is necessary.



Planning approach:



A "water axis" for pedestrians and cyclists shall be developed (via ERDF/Objective 2), aiming to:


- increase the accessibility of the two rivers,
- to increase location attractiveness of the district due to the proximity to water,
- to raise the desire of the current and future citizens to live and work in Geestemünde.

Aqua-Int approach:

As Aqua-Int.-partner, Bremerhaven would be able to initiate and support testing strategies to improve the integration of water in our spatial development processes through:

- the use of a Decision Support Tool to identify the opportunities and effects of water measures;
- Identification and exchange of knowledge on financial and funding arrangements;
- implementation of a spatial development/ decision-making process which integrates 'water';
- lively exchange of experiences and ideas with the project partners.





**Thank you for your attention,
we apologise for our absence.**

City planning office

Gudrun Heckemeier
Fährstraße 20
27568 Bremerhaven
Tel.: 0471 / 590 3248
Fax: 0471 / 590 2079
E-Mail: [Gudrun.Heckemeier@
magistrat.bremerhaven.de](mailto:Gudrun.Heckemeier@magistrat.bremerhaven.de)

Environmental protection office

Theresia Lucks
Wurster Straße 49
27580 Bremerhaven
Tel. : 0471/590-2528
Fax: 0471/590-2981
Email: [Theresia.Lucks@
magistrat.bremerhaven.de](mailto:Theresia.Lucks@magistrat.bremerhaven.de)

Dpt. of economic affairs/ EU-department

Claudia Harms
Elbinger Platz 1
D- 27570 Bremerhaven
Germany
fon: +49471 590-3396
fax: +49471 590-2800
e-mail: [claudia.harms@
magistrat.bremerhaven.de](mailto:claudia.harms@magistrat.bremerhaven.de)